



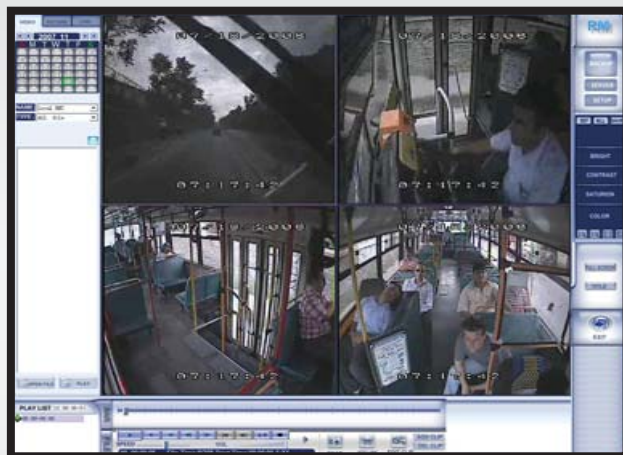
Xr4 Embedded/Mobile Digital Recorder

Features

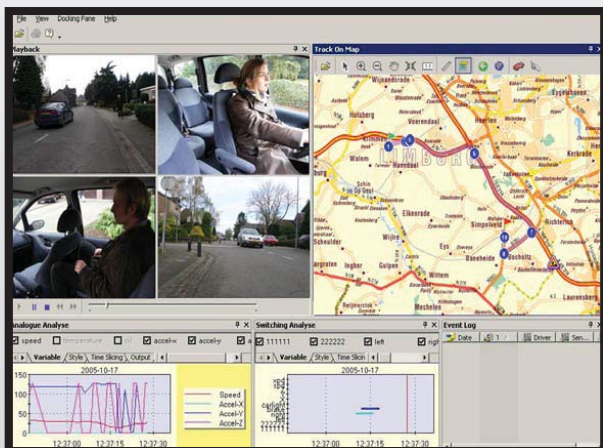
- MPEG-4 Technology for Video Compression
- Removable HDD
- External EDGE/GPRS/CDMA/WIFI Module for Wireless Transmission
- Stand Alone NON-PC Embedded Operating System (RTOS) Provides Maximum Stability
- High Quality MPEG-4 Video Recording and Playback at Full Frame Rate (30FPS)
- 4 Channels Video and Audio Recording Simultaneously
- Built-in GPS Allows for Vehicle Tracking and Location Recording in Video Field
- Compact Flash Card (CFC) Can Be Used for Software Upgrades and Uploading Advertising Clips to the MDR
- Two USB Connectors, Allows Laptop Connection to Download & Upload Data
- Special Anti-Vibration System
- Station Announcement Automatically



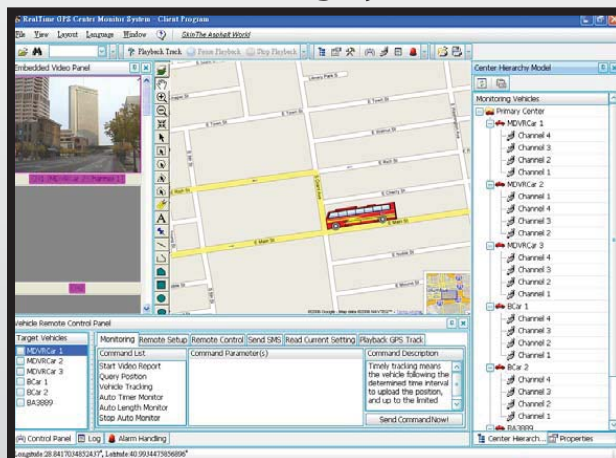
Remote Monitoring Software (RMS)



Analysis Software



Central Monitoring System (CMS)





Xr4 Embedded/Mobile Digital Recorder

System	OS	Linux (providing standalone stable operation system)
	Operation Interface	Hand-held, IR controller with On-Screen Display (OSD) for all operations of the MDR
	Storage	60, 80, 120 and 160 GB (2.5 in. mobile anti-vibration and shock resistance HDD support)
	Signal System	NTSC/PAL
	Input Voltage	12-volt DC or 24-volt DC (can range from 8 V-55V DC)
Video	Camera Input	Up to 4 cameras
	Display	4 Video Window Screens
	Image Quality	8 – level adjustable
	Fwd/Playback speed	x2, x4, x1/2, x1/4
	Stream Standard	ISO1449
	Record Resolution	CIF(352x288 pixels for PAL, 360x240 pixels for NTSC), 1/2D1 (704x288 pixels for PAL, 720x240 pixels for NTSC), D1 (720x576 pixels for PAL, 720x480 pixels for NTSC)
	Image Compression	12.5K-112.5KB/s, 25-150KB/s
	Max FPS	200 / 240 FPS (25/30 FPS/CH at CIF, 12.5/15 FPS/CH at HD1, 6.25/7.5 FPS/CH at D1)
	Display Res.	TV Monitor 704x576 pixels for PAL at D1 / 720x480 pixels for NTSC at D1, VGA output 720x576 pixels for PAL at D1 / 704x480 pixels for PAL at D1
	Audio	Audio Input
Audio Output		2 (stereo)
Audio Compression		ATPCM
I/O Interface	TV-OUT	2 Composite Outputs with BNC connectors
	VGA	1(d-SUB 15 pins)
	LAN	1(RJ-45) 10M/100M Ethernet connector
	USB	2, support USB OTG Technology (USB2.0)
	Serial	RS-485x3, RS-232x2
Network	Protocol	TCP/IP
Alarm	Input	8 input sensors
	Multi-mode	Auto-reset after power-break, auto-alarm when missing signal input, Camera Cover alarm
Power Requirement	Ignition Switch	Device operate once ignition power on/ auto shutdown delay after ignition power off
	Power Consumption	Average 15W
	Power Adapter	8-55V DC. Typical 12V DC @ 5A, 24V @ 3A
Physical Characteristics	Height	59.3 mm (2.33")
	Width	247.5mm (9.74")
	Depth	175.4 mm (6.9 in)
	Weight	4.5 kg (9.92 lb)
Value-added Function	Mobile Entertaining	Auto-play Advertisement, Movie, Music
	Motion Detection	Each channel up to 192 detection zone, sensitivity adjustable
	Record Mode	Manual, continuous, schedule, event, motion detection and pre-event recording
Others	HDD	HDD Bay – 1 IDE HDD, FAT32 format
	Storage Mode	2.5" HDD
	Time Clock	Built-in clock, perpetual calendar
	GPS Function	Optional for built-in module with GPS antenna
	Wireless Communication	EDGE/GPRS/CDMA wireless transmission
	Data R/W mode	FIFO
	Time Synch	GPS Time Synch / NTP (Network Time Protocol) Time Synch via network connection
Environment	Operating Temperature	-45°C - 65°C / -59 - 149°F(w/o HDD), 0~65°C / 32-149°F (w HDD)
	Relative Humidity	≤80%
	Vibration Resistance	< 2 Grms
	Shock Resistance	< 1,200 Grms